

MT - STORMSCOPE Manual

Contents

I. Switching on the MT-Stormscope.....	2
II. Display.....	3
II.1. Map Mode.....	3
II.1.1. Strike Mode.....	3
II.1.2. Cell Mode.....	3
II.2. MFD Mode.....	4
II.2.1. Arc Mode.....	4
II.2.2. 360 ° Mode.....	5
III. Quitting Stormscope.....	6

I. Switching on the MT-Stormscope

Switch the device on and confirm with

- AGREE

Select

- AUX

Activate MT-Stormscope with

- STORM

When the STORM key is pressed, the following button bar appears:



II. Display

Basically, lightning strikes are shown on the MT system as small flashes with red tips. They give the precise location of lightning strikes.

II.1. Map Mode

II.1.1. Strike Mode



In Strike mode, each lightning strike picked up by the WX-500 sensor is displayed on the chart. Approaching thunderstorms can be instantly recognized and the hazard zone avoided.

II.1.2. Cell Mode



Cell mode shows the location of presumed thunder cells based on the logic of the WX-500 from data so far acquired. The Cell mode is also extremely useful during a phase of intense electrical activity in the air, since it does not display each individual lightning strike, but only presumed thunder cells.

II.2. MFD Mode

To change to Dedicated mode, press:

- VIEW
- MFD

II.2.1. Arc Mode



Display of MT-Stormscope data in Off-center mode. Advantage: improved forward view.

- RNG+ / RNG- Changes the range between 10 nm and 800 nm
- 360 Switches to 360° mode
- MAP+ Quits Dedicated mode and returns to the chart
- BACK Returns to FLT / MAP Main menu



Range 300 nm

✓ **RNG+** (3 mal)

Range 800 nm



Toggling between Cell and Strike mode is the same in Dedicated mode as in MAP-mode (see example on page 5 - 360° mode)

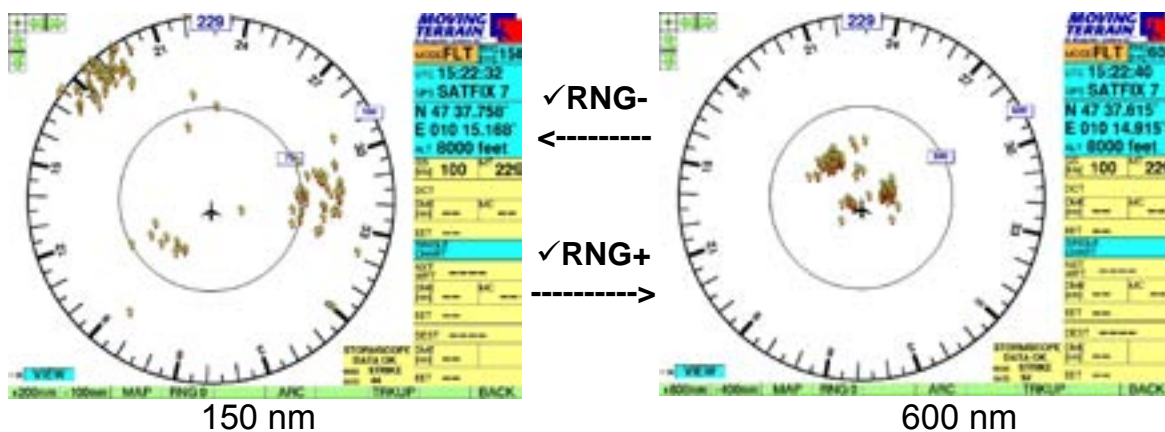
- BACK
- AUX
- STORM
- CELL / STRIKE

II.2.2. 360 ° Mode

Display of MT-Stromscope data in Center mode. Advantage: Overview not only in direction of flight.



Data display in Strike mode. Every electrical discharge detected by the WX-500 is shown.

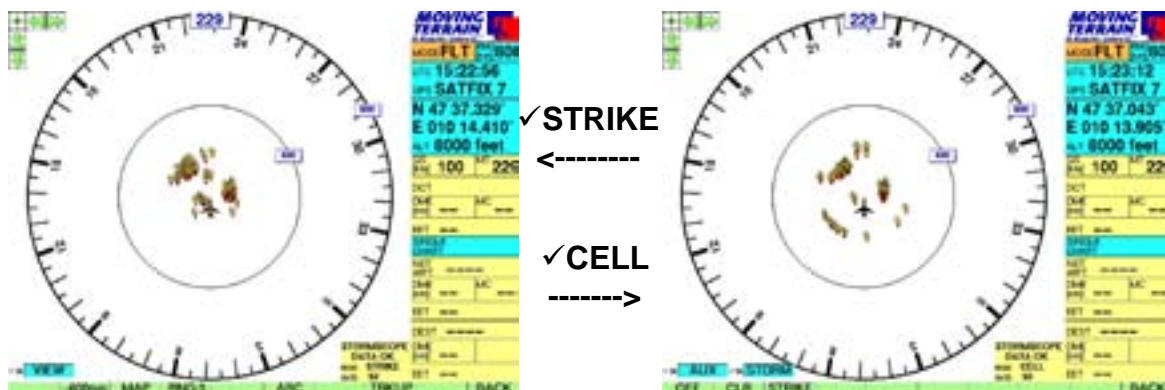


150 nm

600 nm

Switching to Cell mode on the View menu:

- BACK
- AUX
- STORM
- CELL / STRIKE



Display in Strike mode at a range of 800 nm

Display in Cell mode at a range of 800 nm

III. Quitting Stormscope

- BACK
- AUX
- STORM
- OFF

