



NEW: High Performance 3D-graphic accelerator for MT-VisionAir X series



For the MT-VisionAir X series now the triple speed is available - via USB-Stick - through intelligent software, without hardware modification.

Due to the high computation performance the 3D terrain motion appears fluent - during acceleration phases of the aircraft or during a highly dynamic helicopter flight.

Optimized chart quality in 3D - available right now



New chart mathematics allows an improved display of the 3D charts – the ICAO charts gain significantly in sharpness and quality

NEW: Helpful combination of navigation guidance symbols in the 3D terrain

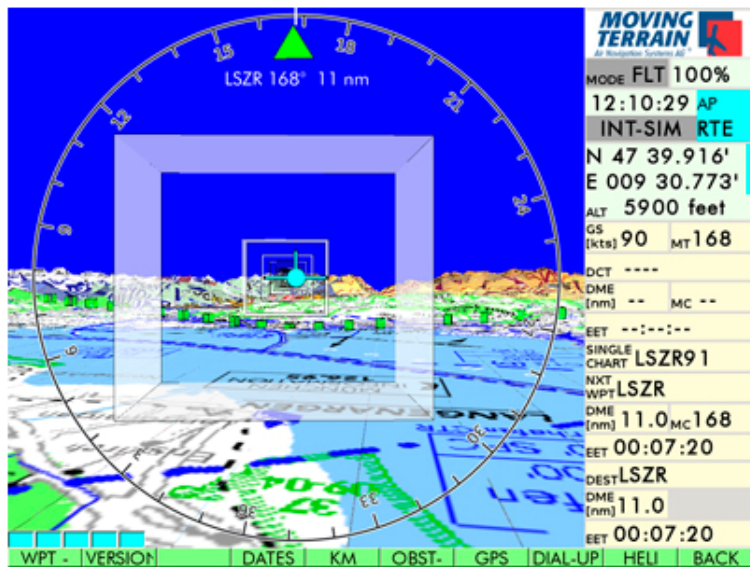


The **flight path indicator** anticipates the position of the aircraft related to 10 sec. continuation. The aircraft symbol anticipates exactly the required flight path including wind influences and WCA's.

The **course rose** in full size improves intuitive orientation. The current heading is verifiable at a glance, the DCT to the field is shown by a **bezel**.

Highway in the sky: semi-transparent frames with the colours of the 2D symbolism mark the path. The task is to navigate in the center of the frames.

Routing: white coloured frames and magenta respectively to intercept the route.



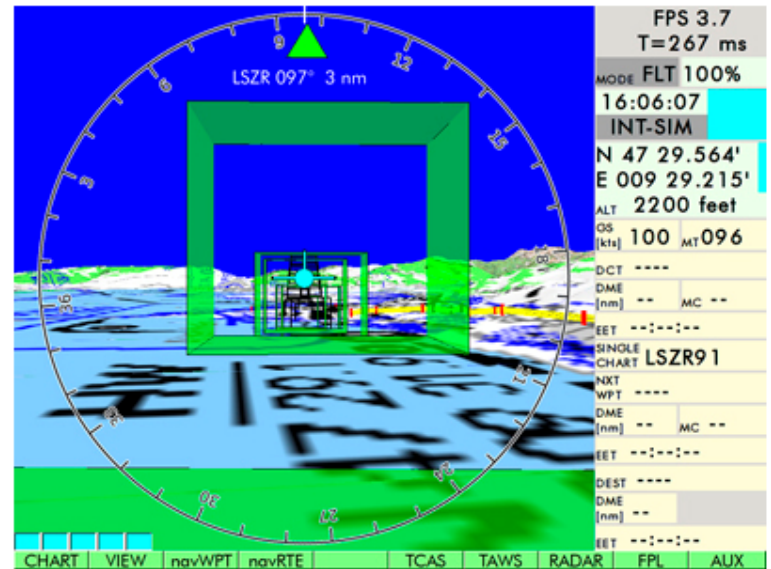
Direct: light blue coloured frames mark the „highway“ towards the airport. Specific they mark a 3D corridor to the ARP (Airport Reference Point).

Nearest: light green coloured frames show an "ILS type" the path to the respective runway threshold of the APT selected.

3dimensional simulated "ILS" Approach via NEAREST

Indicator for safe arrival: The actual flight path is always depicted by the ACFT Symbol. Always means also in case of engine failure:

- if the symbol stays within the frames, the APT will be reached
- if it moves above, you have extra altitude and time,
- if it moves below, make an other plan.



MT-VisionAir III and X series, MT-Ultra - the ICAO July edition is available!

The up-to-date ICAO chart Europe 1:500.000 is available from now on.

With the new software version a **significant improvement of the chart resolution** has been achieved, especially for high-scale charts (e.g. 1:500 000).

The following countries are new:

Norway, Sweden, Northern Ireland and Scotland, BeNeLux, France, Austria, Poland.

The update can be ordered for 280,- EUR net (for MT-Ultra 560,- EUR net).

